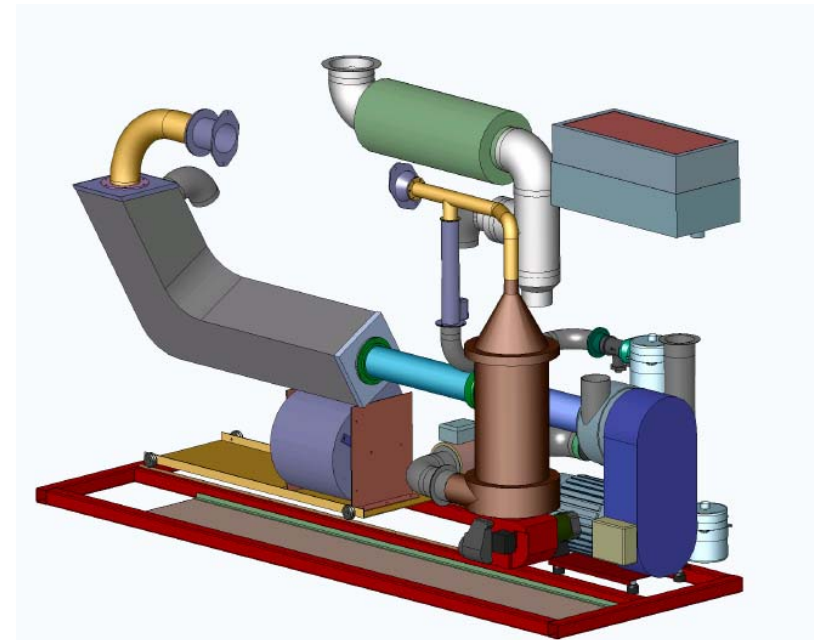
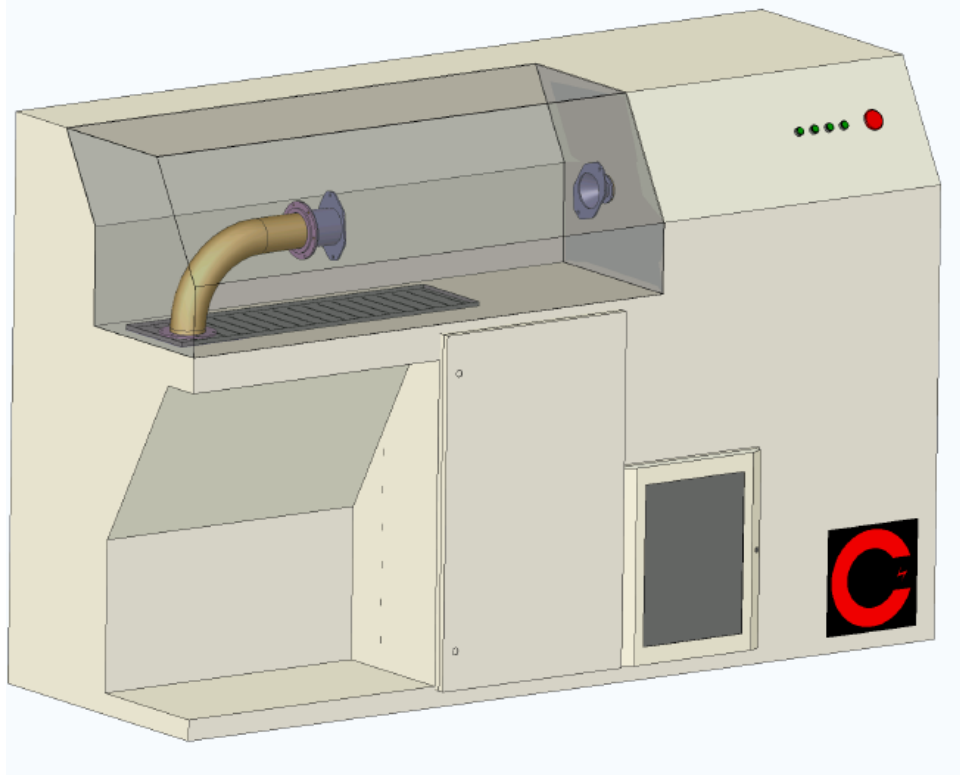




• CAMBUSTION •

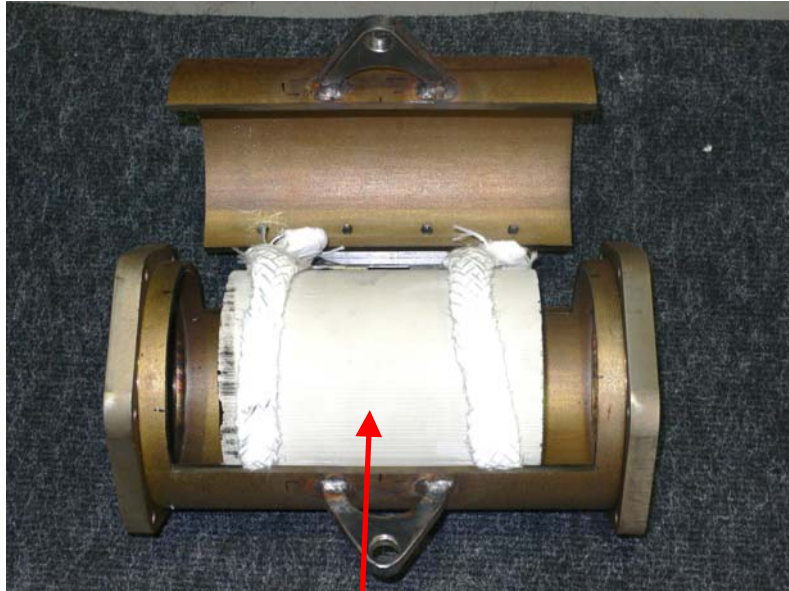
# Cambustion Production DPG Package/ Layout





• CAMBUSTION •

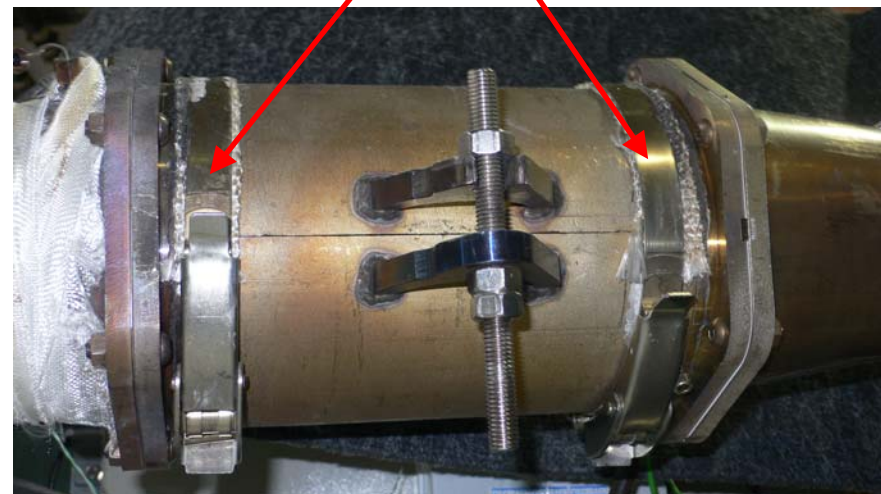
## De-mountable DPF arrangement for Brick testing



Brick mounted in hinged can  
– sealed with Ceramic Wool

Can Clamped shut to provide gas seal

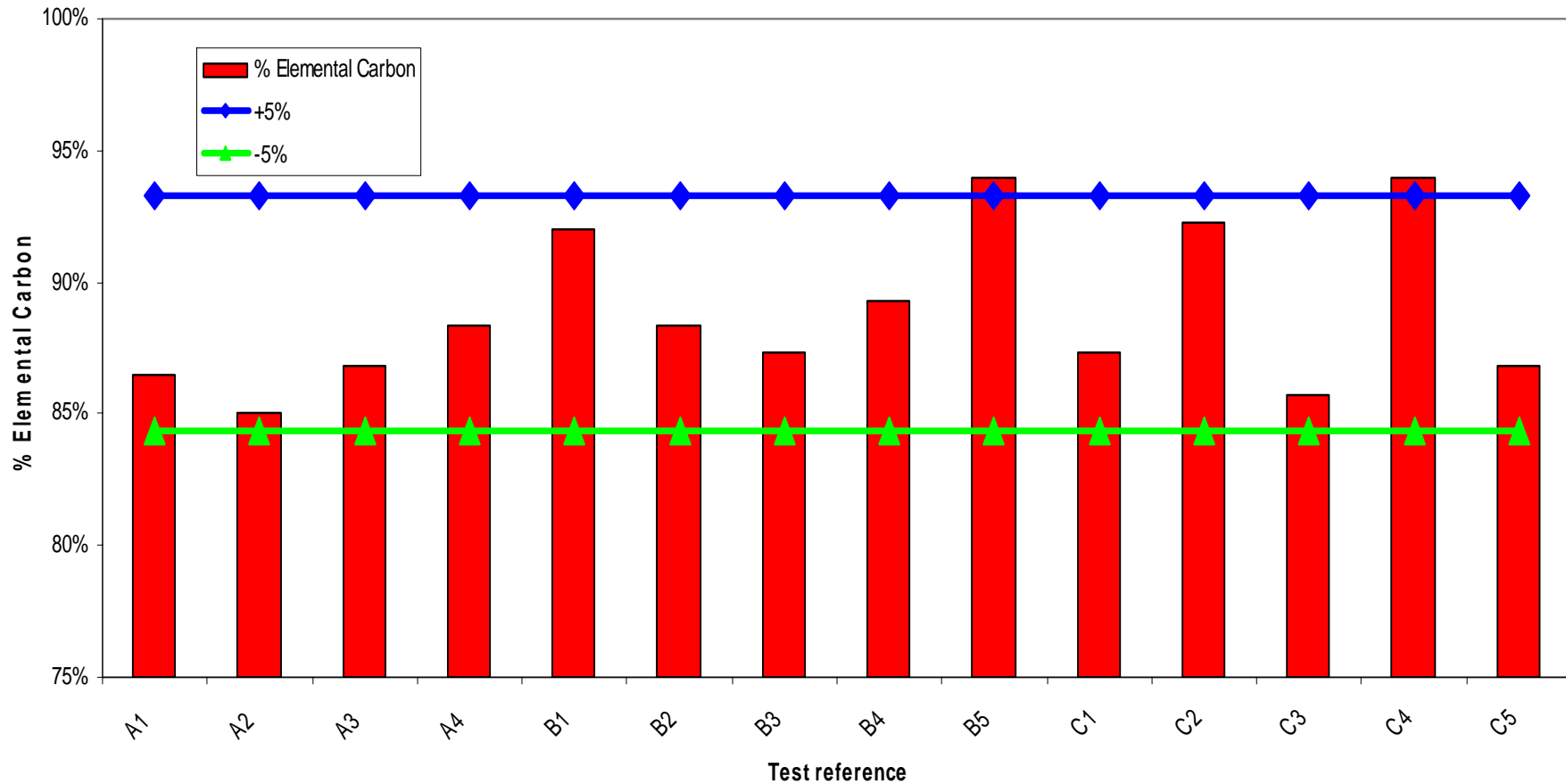
Over-centre clamps used to seal slits





• CAMBUSTION •

# DPG Repeatability in soot composition (10g/hr)

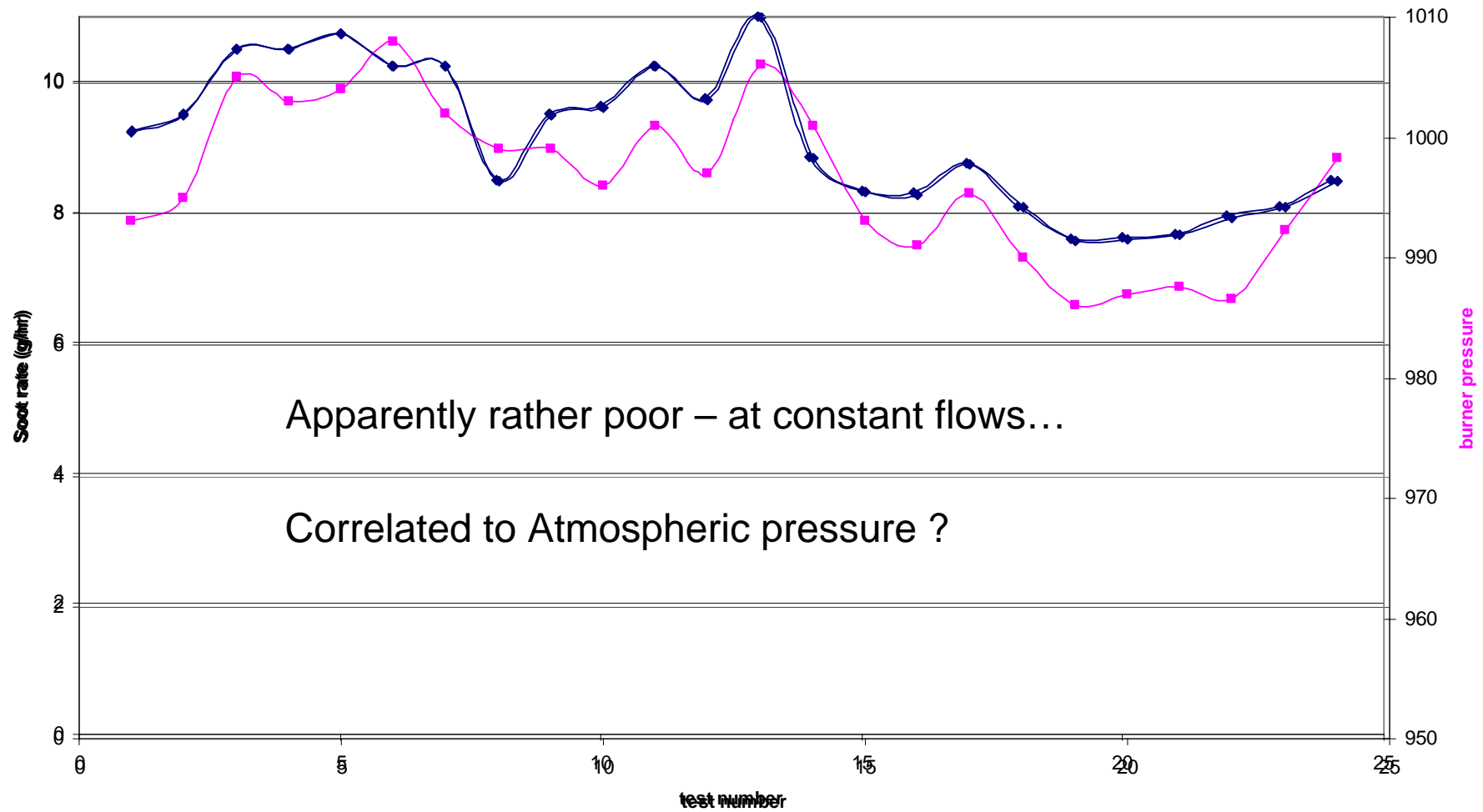


TGA analysis (courtesy Ford R+E Ctre)



• CAMBUSTION •

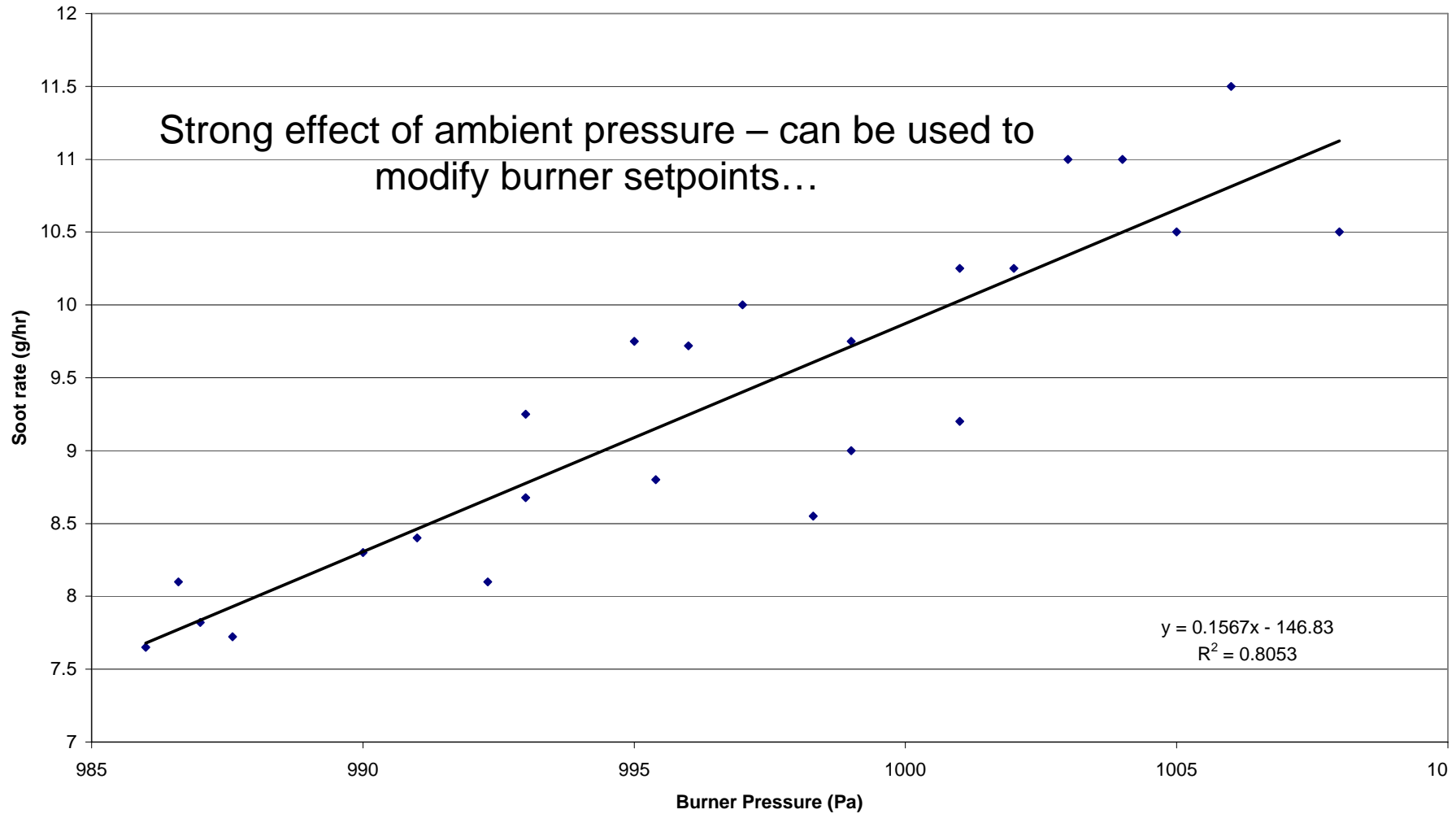
# DPG Repeatability in soot rate (10g/hr nominal)





• CAMBUSTION •

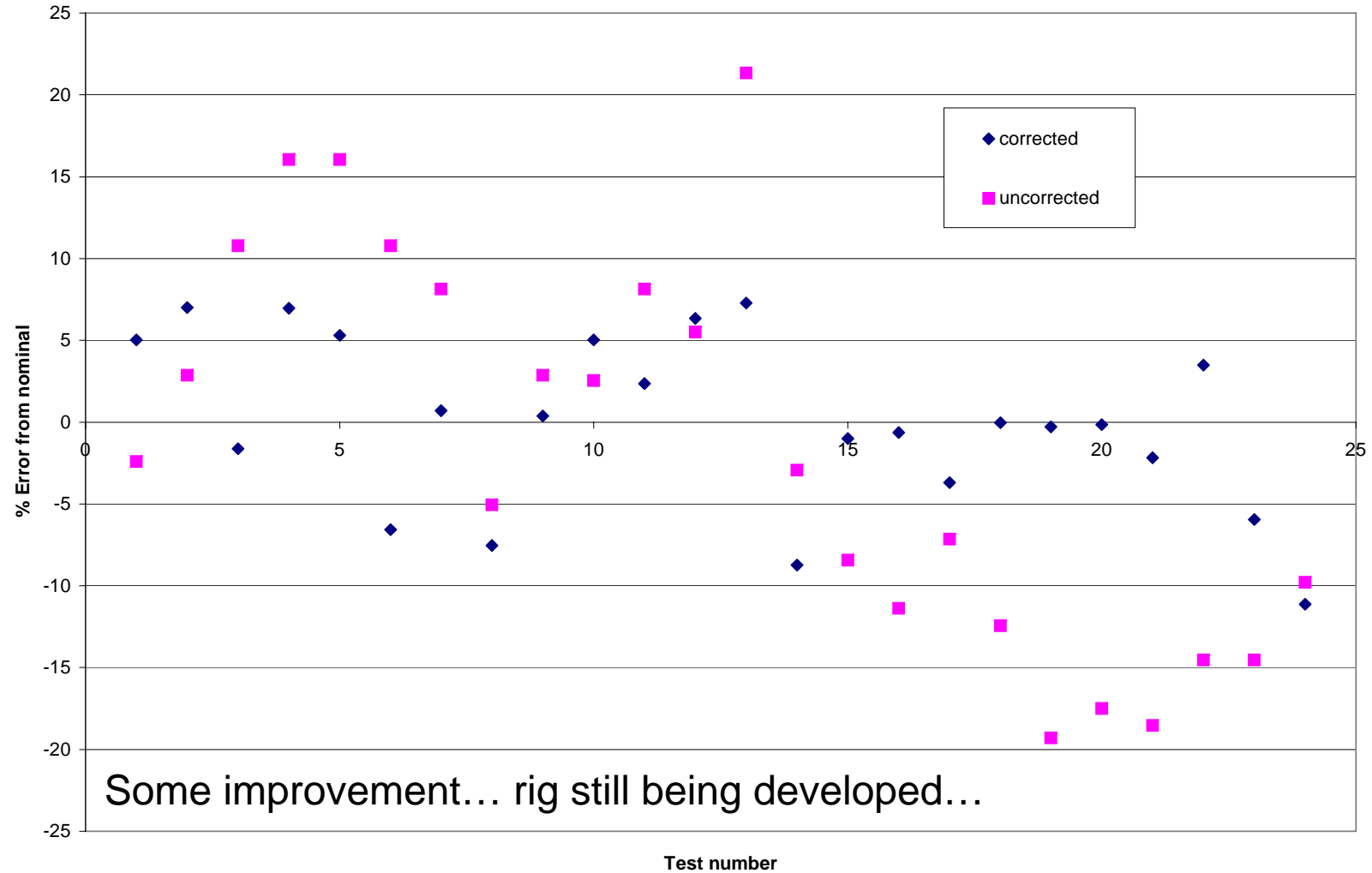
# Soot rate vs ambient pressure changes





• CAMBUSTION •

# Corrected and uncorrected soot rates



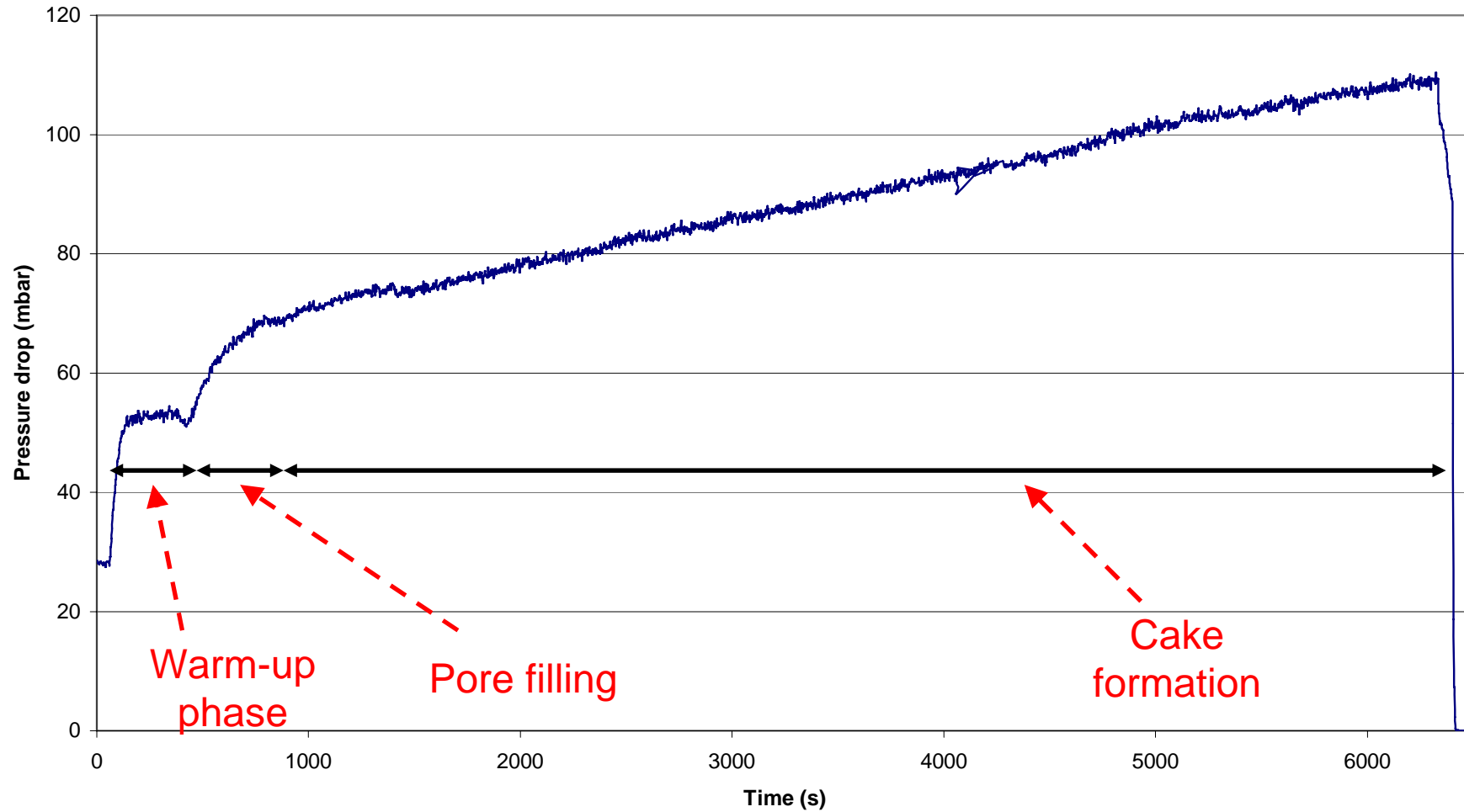




• CAMBUSTION •

# Clean part - Warm-up, pore filling, cake formation

DP pressure (mbar)







• CAMBUSTION •

# Partly loaded part – no pore filling....

